

STANDARD ARRIVAL CHART-  
INSTRUMENT (STAR)-ICAO

TRANSITION ALTITUDE 10000 FT
TRANSITION LEVEL FL 120

INFO 118.650

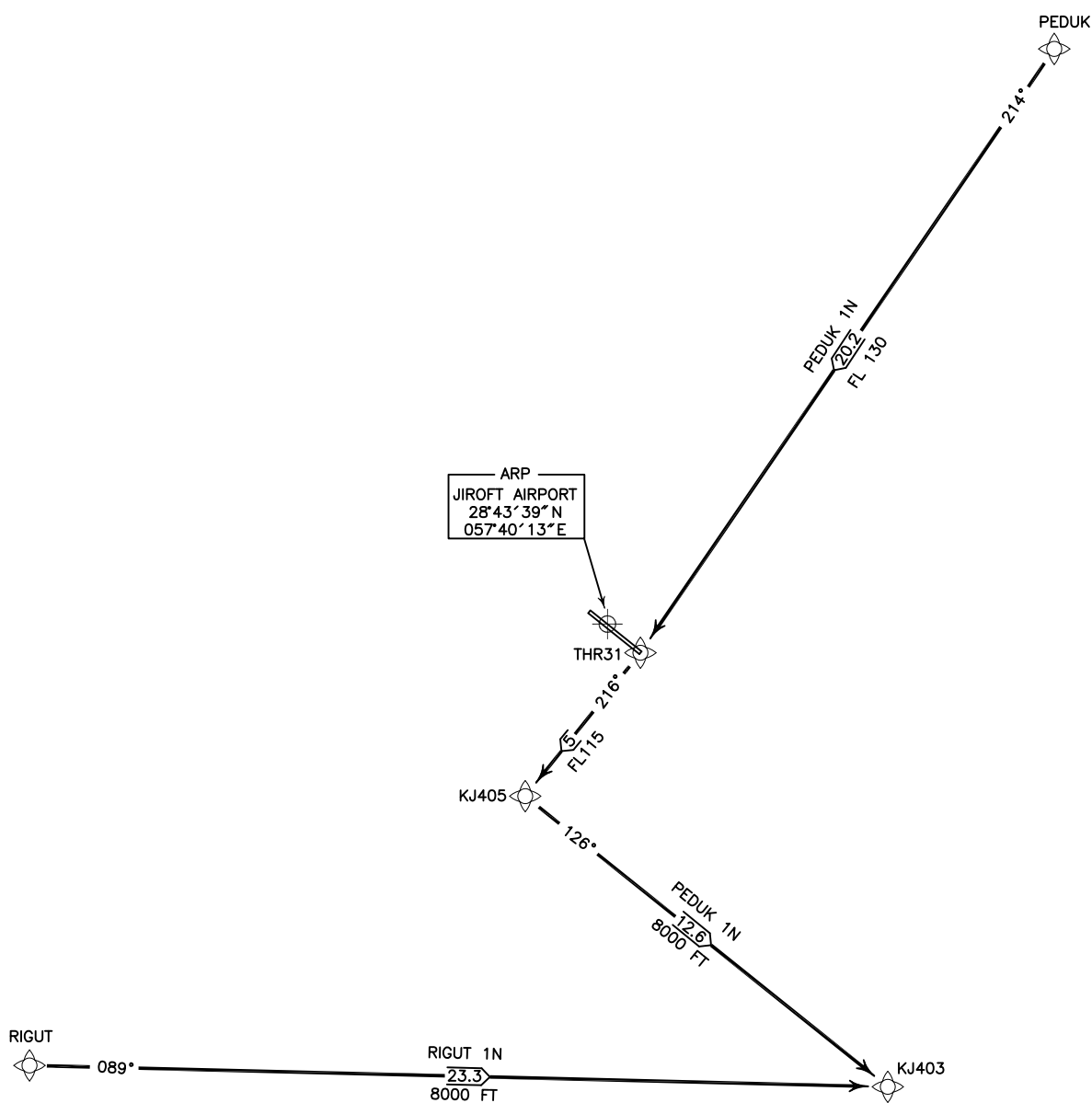
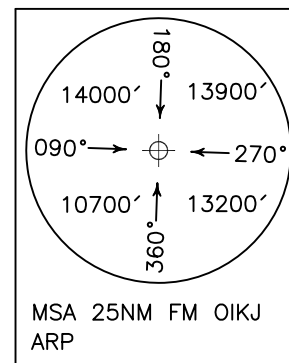
JIROFT/JIROFT  
RNP1 RWY 13/31  
PEDUK 1N  
RIGUT 1N

ALL DIRECTIONS ARE MAGNETIC,  
LEVEL AND ELEVATIONS ARE IN FEET,  
DISTANCES ARE IN NAUTICAL MILES.

ATZ class "G".

ACTUAL DESCENT CLEARANCE  
WILL BE AS DIRECTED BY ATC.

N  
VAR 2°E  
NOT TO SCALE



PEDUK 1N ARR:  
FM PEDUK proceed to KJ403.  
RIGUT 1N ARR:  
FM RIGUT proceed to KJ403.